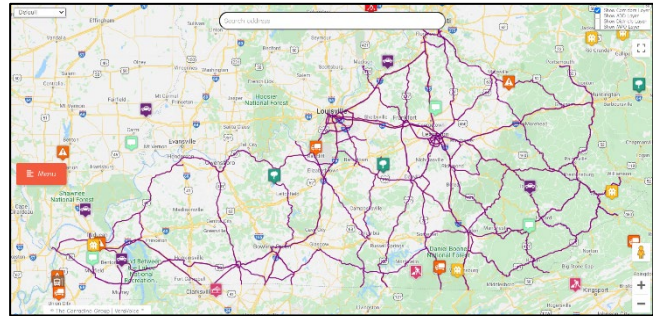


VeraVoice™ is a new internet-based data collection tool developed by the Corradino Group. This application can be used to promote stakeholder/public engagement in a cost-effective way for planning, public works and construction projects. VeraVoice™ has a two-level structure:

- A **Public** facing site to collect survey data
- A behind-the-scene **Administration** site to manage the survey.

The **Public** facing site allows the public to enter comments at a desired location on the map. It includes the following attractive features:

- Allows users to specify locations where concerns/issues might exist by dropping a “pin” and providing comments;
- Allows users to upload images associated with their comments;
- Provides customized comment categories and text length limits;
- Provides customized buffer ranges to allow a “pin” to be associated with the survey objects such as a corridor (e.g., a 0.5-mile buffer in this survey);
- Automatically zooms the map to a specified address;
- Allows others to see, respond to and vote on existing comments;
- Allows users to add optional identification information (e.g., as an anonymous or provide name/contact information);
- Uses Google map/Street View and customized GIS layers (e.g., MPOs and ADDs boundaries) to provide familiarity;
- Saves comment’s coordinates for further GIS mapping and post-processing;
- Is mobile device friendly.



The **Administration** site allows authorized personnel to log in, manage the survey, and retrieve data. Main features include:

- Provides a password-protected log in;
- Enables/disables comments and responses, controlling their display on the public map;
- Allows comments and responses to be edited before they are published;
- Provides automatic notification of new comments by website message or emails;
- Tracks comments in a calendar;
- Creates heat maps by comment location and category;
- Summarizes charts by comment category and status (enabled/disabled);
- Searches & filters comments by category and submission data/time;
- Exports data to .csv files. Data can be easily geocoded in GIS using comment’s coordinates.

